

Thermion

Технические характеристики

По вопросам продаж и поддержки обращайтесь:

Алматы (7273)495-231
Архангельск (8182)63-90-72
Астрахань (8512)99-46-04
Барнаул (3852)73-04-60
Белгород (4722)40-23-64
Брянск (4832)59-03-52
Владивосток (423)249-28-31
Волгоград (844)278-03-48
Вологда (8172)26-41-59
Воронеж (473)204-51-73
Екатеринбург (343)384-55-89
Иваново (4932)77-34-06
Ижевск (3412)26-03-58
Иркутск (395)279-98-46
Россия (495)268-04-70

Казань (843)206-01-48
Калининград (4012)72-03-81
Калуга (4842)92-23-67
Кемерово (3842)65-04-62
Киров (8332)68-02-04
Краснодар (861)203-40-90
Красноярск (391)204-63-61
Курск (4712)77-13-04
Липецк (4742)52-20-81
Магнитогорск (3519)55-03-13
Москва (495)268-04-70
Мурманск (8152)59-64-93
Набережные Челны (8552)20-53-41
Нижний Новгород (831)429-08-12
Киргизия (996)312-96-26-47

Новокузнецк (3843)20-46-81
Новосибирск (383)227-86-73
Омск (3812)21-46-40
Орел (4862)44-53-42
Оренбург (3532)37-68-04
Пенза (8412)22-31-16
Пермь (342)205-81-47
Ростов-на-Дону (863)308-18-15
Рязань (4912)46-61-64
Самара (846)206-03-16
Санкт-Петербург (812)309-46-40
Саратов (845)249-38-78
Севастополь (8692)22-31-93
Симферополь (3652)67-13-56
Казахстан (7172)727-132

Смоленск (4812)29-41-54
Сочи (862)225-72-31
Ставрополь (8652)20-65-13
Сургут (3462)77-98-35
Тверь (4822)63-31-35
Томск (3822)98-41-53
Тула (4872)74-02-29
Тюмень (3452)66-21-18
Ульяновск (8422)24-23-59
Уфа (347)229-48-12
Хабаровск (4212)92-98-04
Челябинск (351)202-03-61
Череповец (8202)49-02-64
Ярославль (4852)69-52-93



Superior thermal sensitivity



<25mK NETD



Thermal Imaging Riflescopes

THERMION 2 PRO

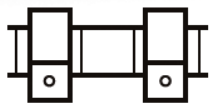
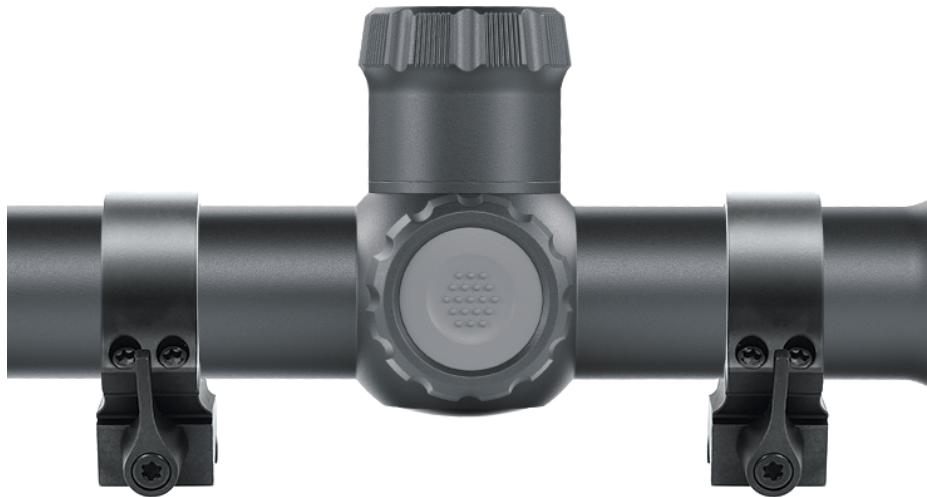


Disclosure

The product availability on website is for marketing purpose only and does not guarantee/imply that the device is available in your country for use/sell/order/other purposes. These products require special license and even could be forbidden due to local legislation.



Classic design. Mounting on standard 30 mm rings



30mm

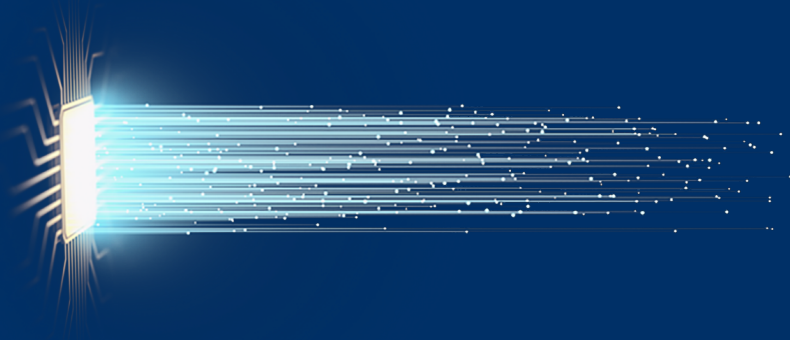
Classic shape of housing is ideal for all types of hunting and simplifies mounting. Designed from the ground up for ease of use, Thermion riflescopes mount to standard 30mm scope rings.

No specialized tools or equipment are required.



Super sensitive thermal imaging sensor

Thermal imaging sensor with NETD <25mK value ensures perfect detail recognition even in the most severe weather conditions when thermal contrast is low. The smallest temperature differences in observed objects can be clearly visible during heavy rainfall, dense fog or cold mornings making it easy to recognize and identify the game and its features.





Fast aperture f1.0 germanium optics



Quality fast aperture germanium optics ensures optimal heat energy transmissivity minimizing noise and improving detail of observed scene.





Extreme detection range



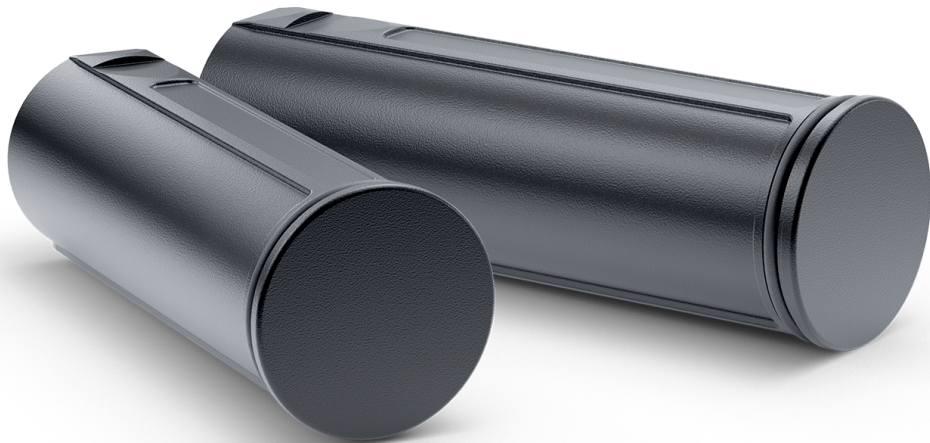
1800m


High quality germanium optics coupled with an advanced thermal imaging sensor ensure an unprecedented detection range of up to 2.000 yards (1.800 metres) in, even in complete darkness.



Long battery life. Up to 10 hours on a single charge

Thermion 2 Pro riflescopes feature a unique combined battery system consisting of two rechargeable Li-ion batteries internal and external. External rechargeable battery can be hot swapped in a matter of seconds, providing additional time during the hunt.





Wi-Fi integration with iOS and Android devices. Stream Vision 2 application.

The built-in Wi-Fi module will connect the device with smartphones based on Android and iOS via the Stream Vision 2 mobile application. This combination provides a great opportunity, such as wireless update of the device software, transmission of images to the screen of a mobile device in real time, remote control of digital functions of the device and many others. Users registered in the application are provided with cloud storage space for photos and videos taken with a digital or thermal imaging device.



Recoil Rated up to .375 H&H, 12-Gauge and 9.3x64

Recoil rated up to 6,000 joules for flawless performance on larger calibers up to .375 H&H, 12-gauge and 9.3x64.





Variable magnification

The base magnification of Thermion 2 Pro riflescopes can be increased by means of digital zoom. Zoom changes either gradually in 2x steps or continuously offering the ideal ratio of magnification and visible field of view for specific situations.



Enhanced Wi-Fi connectivity with 2.4 / 5 GHz waveband support

In Thermion 2 PRO thermal imagers, the standard smartphone connection frequency range via a 2.4 GHz Wi-Fi channel is complemented with an effective 5 GHz range. The 5 GHz connection offers better bandwidth, a faster data transfer rate, noise immunity and improved connection stability, resulting in more productive and easier operation of the thermal imager with a smartphone.



Zeroing profiles management

Store up to 5 zeroing profiles, with 10 distance coordinates each for varying situations, in internal memory for quick rifle change-outs and on-the-fly adjustments.



A selection of 10 reticle shapes in 9 colour modes

Thermions possess a wide array of shape and color customizable reticles, including static, ballistic scalable reticles. 9 Color options help to optimize aiming for specific conditions.



Photo and video recording

Keep the best moments of observation and share them with your friends and hunting colleagues. A touch of a button is enough to capture an interesting moment or start recording a video. 16 GB of internal memory will give the ability to record many hours of video and tens of thousands of photos.



High-precision aiming in the «Picture-in-picture» mode

The "Picture-in-picture" function enables the shooter to display a high-precision zeroing frame. Taking up only 10% of the total display area, the frame shows a magnified image of the target and reticle, allowing the user to closely see the image in the aiming area and have visual control of the entire field of view at the same time.



High contrast HD AMOLED display

1024x768 HD AMOLED display has enhanced color rendering, power saving, a high contrast image, quick-response, providing clear and smooth images for on-the-move observation or in cold conditions.



A selection of 8 colour palettes

A choice of 8 colour palettes lets the user observe their field of view more effectively, allowing them to optimise the unit for specific tasks as well as react to changing observation conditions. White Hot,

Black Hot and Red Hot are optimal for object detection, Rainbow and Ultramarine help increase c recognition & identification. Red Monochrome, Sepia and Violet are most suitable for long observ night.



Completely waterproof IPX7

With an IPX7 waterproof rating, the Thermion 2 PRO riflescopes work in conditions of high humid rain and can withstand half an hour immersion in water to a depth of 1 meter.

Specifications



Thermion 2 XQ35 Pro



Thermion 2 XQ50 Pro



Thermion 2 XP50 Pro

Main

Sensor	384x288 pix. @ 17 μ m (NETD <25 mK)	384x288 pix. @ 17 μ m (NETD <25 mK)	640x480 pix. @ 17 μ m (NETD <25 mK)
Objective lens	F35 F/1.0	F50 F/1.0	F50 F/1.0
Magnification, x	2.5-10	3-12	2-16
Field of view (HxV), degrees / m@100m	10.7/18.7	7.5/13.1	12.4/21.8
Detection range, m	1350	1800	1800

Sensor

Type	uncooled	uncooled	uncooled
Resolution, pixels	384x288	384x288	640x480
Pixel pitch, μm	17	17	17
NETD, mK	<25	<25	<25
Frame rate, Hz	50	50	50

Optics

Objective lens	F35 F/1.0	F50 F/1.0	F50 F/1.0
Magnification, x	2.5-10	3-12	2-16 (x4 zoom)
Field of view (HxV), degrees / m @ 100 m	10.7/18.7	7.5/13.1	12.4/21.8
Eye relief, mm	50	50	50

Display

Type	AMOLED	AMOLED	AMOLED
Resolution, pixels	1024x768	1024x768	1024x768

Range Performance

Detection range, m	1350	1800	1800
--------------------	------	------	------

Laser Rangefinder

Safety class for laser equipment according to IEC 60825-1:2014	-	-	-
Wavelength, nm	-	-	-
Max. measuring range, m	-	-	-
Measurement accuracy, m	-	-	-

Reticle

Click value, H/V, mm at 100 m	18 – 2.5x, 9 – 5x, 4.5 – 10x	13 – 3x, 6.5 – 6x, 3.25 – 12x	21 – 2x, 10.5 – 4x, 5.25 – 8x, 2.6 – 16x
Click range, H/V, mm at 100 m	3600/3600	2600/2600	4200/4200
Number of preloaded reticles	10	10	10

Video Recorder

Video / photo resolution, pixel	1024x768	1024x768	1024x768
Video / photo format	.mp4 / .jpg	.mp4 / .jpg	.mp4 / .jpg
Built-in memory, GB	16	16	16

Wi-Fi

Wireless Protocol	Wi-Fi	Wi-Fi	Wi-Fi
Wireless Standard	802.11 b/g/n/ac	802.11 b/g/n/ac	802.11 b/g/n/ac
Frequency, GHz	2.4 / 5 GHz	2.4 / 5 GHz	2.4 / 5 GHz

Environmental Characteristics

Degree of protection, IP code (IEC60529)	IPX7	IPX7	IPX7
Operating temperature range, °C	-25 – +50	-25 – +50	-25 – +50

Connections and Compatibilities

Max. recoil power on rifled weapon (Eo), Joules	6000	6000	6000
Shock resistance on the smooth-bore rifles, caliber	12	12	12
Compatible mounts	Standard 30 mm rings	Standard 30 mm rings	Standard 30 mm rings
Remote control	-	-	-
Supported Application	Stream Vision 2	Stream Vision 2	Stream Vision 2

Power Supply

Output voltage, V	3.0-4.2	3.0-4.2	3.0 – 4.2
Battery type	Li-Ion Battery Pack APS2 (external), Li-Ion Battery Pack APS3 (external)-sold separately*, Li-Ion Battery Pack APS5 (internal)	Li-Ion Battery Pack APS2 (external), Li-Ion Battery Pack APS3 (external)-sold separately*, Li-Ion Battery Pack APS5 (internal)	Li-Ion Battery Pack APS2 (external), Li-Ion Battery Pack APS3 (external)-sold separately*, Li-Ion Battery Pack APS5 (internal)
Capacity, mAh	2000 (external) + 3200 (external)* + 4900 (internal)	2000 (external) + 3200 (external)* + 4900 (internal)	2000 (external) + 3200 (external)* + 4900 (internal)
Operating time on battery pack (at t=22°C), h *	10	10	10
External power supply, V	5 V, 9 V (USB Type-C Power Delivery)	5 V, 9 V (USB Type-C Power Delivery)	5 V, 9 V (USB Type-C Power Delivery)

Weight & Size

Body material	Metal	Metal	Metal
Dimensions, mm	399x78x80	412x78x83	412x78x83
Weight, kg	0,88	0.9	0.9

Trade Data

SKU (Model #)	76541	76548	76547
Status	production	production	production



The first thermal imaging riflescope with classic design and built-in laser rangefinder

The laser rangefinder is seamlessly integrated into a slim design riflescope. The rangefinder is compact, the receiver and emitter are within clearance limits of a single optical channel. The measuring range is 800 metres – the Thermion 2 LRF provides the hunter with an accurate sense of distance at the hunting site helping to take a precise shot.



F/1.0



30mm



10h



M/Y

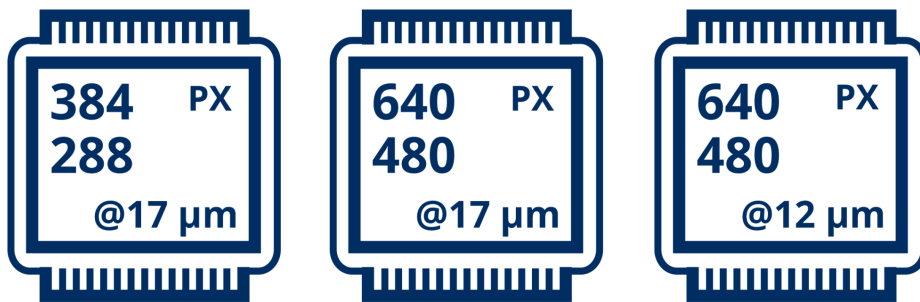
NEW

THERMION 2 LRF





High Definition Thermal Sensor



Sharp, richly contrasted thermal imaging for enhanced identification of animals, their extremities and even the smallest details, i.e. branches, leaves, grass and terrain.



Unprecedented Thermal Sensor Sensitivity

Thermal imaging sensor with NETD <25mK ensures perfect detail recognition even in the hardest weather conditions when thermal contrast is low. The smallest temperature differences will be clearly visible during the rainfall, fog or cold mornings in the most difficult conditions for thermal imaging.

XP



XQ

PRO

SERIES



Fast Aperture Lens F50/1.0

The characteristics of thermal imaging optics have a decisive influence on a thermal imager's ability to capture even the lowest radiation levels. Ultimate detection efficiency is achieved with the fast lens of the Thermion 2 LRF (F50/1.0) thermal imager in combination with the highly sensitive thermal sensor. The Thermion 2 LRF gives users the best quality, most detailed & high-contrast, informative imagery every time, even during rain or fog, when the temperature contrast of the observed scene is minimal.



F/1.0

A person wearing a dark jacket is holding a thermal imaging rifle. The rifle is black and has a large objective lens at the front. The background is dark, and the lighting is focused on the rifle and the person's hands. A small red lightning bolt icon is positioned above the main text.

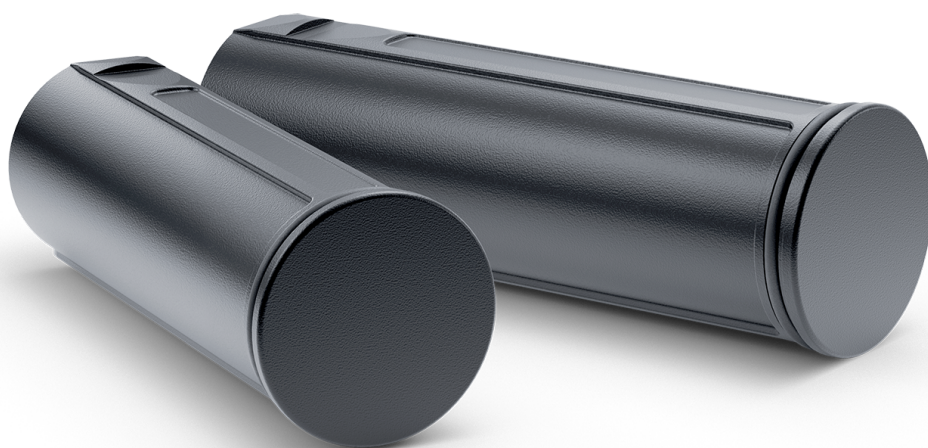
Long detection range up to 2300 m

A powerful long-distance F50/1.0 objective lens combined with a highly-sensitive thermal imaging sensors provides exceptional detection capabilities. A standard 1.8m tall object can be detected on a distances of 1800 – 2300 m away in complete darkness.



Up to 10 hours of battery life on a single charge

The Thermion 2 LRF is powered with two rechargeable batteries: one built-in with a capacity of 4.9 Ah, the other replaceable with a capacity of 2 Ah. A single charge guarantees up to 10 hours of battery life, which covers the time of active use of the scope for a hunt. The embossment on the body of the replaceable battery for accurate determination of the correct position makes it possible to quickly and confidently replace a flat battery with a new one in complete darkness by touch.



A close-up photograph of a person's hands holding a rifle with a scope. The person is wearing a dark, textured jacket. The rifle is black and has a scope mounted on top. The person's right hand is on the trigger guard, and their left hand is on the scope. The background is blurred, showing a rocky or outdoor environment. A red lightning bolt icon is positioned above the main title.

High-precision ambidextrous lens focusing

Objective lens with internal focusing mechanism gives a clear and sharp image at any range. Ergonomic focusing wheels are located on the right and left sides, making focusing easy either left- or right-handed.

Clear on Target!



Variable magnification

The base magnification of Thermion 2 LRF riflescopes increases by 4x to 8x depending on model. The zoom changes either gradually by 2x steps or continuously to set the ideal ratio of magnification and visible field of view for specific situations.



High-precision aiming in the "Picture-in-picture" mode

The "Picture-in-picture" function enables the shooter to display a high-precision zeroing frame. Taking only 10% of the total display area, the frame shows a magnified image of the target and reticle and allows the user to closely see the image in the aiming area and have visual control of the entire field of view at the same time.



5 individual shooting profiles / 50 zeroing distances

Zeroing settings are saved in a shooting profile. The Thermion 2 LRF memory contains up to five shooting profiles for several types of weapons or cartridges. Each profile can hold up to ten zeroing distances.



A selection of 10 reticle shapes in 9 color modes

A reticle is electronically displayed in the same plane as the target. The Thermion 2 LRF memory contains ten reticle configurations and functions (direct shot type, ballistic, scalable and regular), available in nine colors.

Rugged and Reliable



Mounting on standard 30 mm rings

The Thermion 2 LRF offers visual aesthetics on any hunting weapon. From the outside the riflescope resembles a classic day sight in a 30mm housing. This form factor provides flexibility for mounting the scope on hunting weapons using proven ring solutions.



Instant Start-up

Just 3 seconds from the moment you press the power button the Thermion 2 LRF is completely ready for work.



High caliber recoil resistance: 12 gauge, 9.3x64, .375H&H

Thermion 2 LRF thermal riflescopes are high impact resistant and can be used with rifled hunting weapons with calibers of 9.3x64, .30-06, .300, .375H&H, etc., as well as with smooth-bore and pneumatic weapons.



Completely waterproof IPX7

With an IPX7 waterproof rating, the Thermion 2 LRF riflescopes work in conditions of high humidity and heavy rain and can withstand half an hour immersion in water to a depth of 1 meter.



Operating temperature range: -25 to +50 °C

Thermion 2 LRF riflescopes are designed to operate in a wide range of temperatures -25 to +50 °C. The frost-resistant AMOLED display has a standout quick response time and ensures a sharp image is observed in motion.

Image. Quality



High contrast HD AMOLED display

1024x768 HD AMOLED display has enhanced color rendering, power saving, a high contrast image and quick-response, providing clear and smooth images for on-the-move observation or in cold conditions.



A selection of 8 color palettes

A choice of 8 colour palettes lets the user observe their field of view more effectively, allowing them to optimise the unit for specific tasks as well as react to changing observation conditions. White Hot, Black Hot and Red Hot are optimal for object detection, Rainbow and Ultramarine help increase chances for recognition & identification. Red Monochrome, Sepia and Violet are most suitable for long observation in the night.



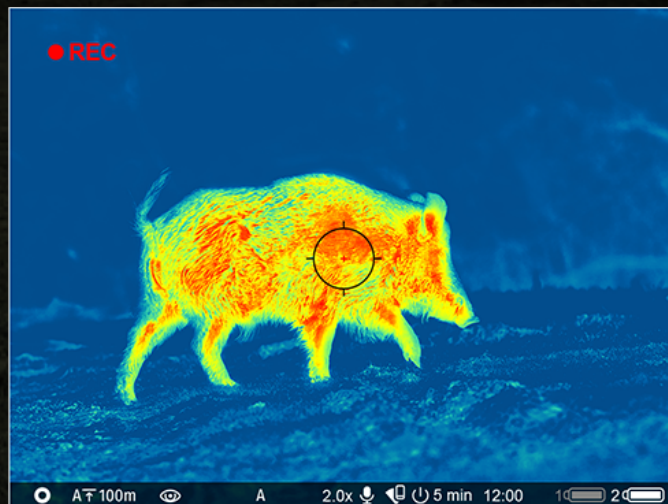
Wide-angle eyepiece for comfortable observation

The wide-angle eyepiece (29.5°) and wide viewing angle of the HD quality AMOLED display provide comfortable image perception and the absence of the keyhole effect with safe removal of the exit pupil of 50mm. Observation with the Thermion 2 LRF does not strain your eyes and enables the hunter to fully concentrate on the hunting process.



Photo and video recording

Keep the best moments of observation and share them with your friends and hunting colleagues. One touch of a button is enough to capture an interesting moment or start recording a video. 16 GB of internal memory will give the ability to record many hours of video and tens of thousands of photos.





Stream Vision 2. WiFi integration with iOS and Android devices

The built-in WiFi module will connect the device with smartphones based on Android and iOS via the Stream Vision 2 mobile application. This combination provides a great opportunity, such as wireless update of the device software, transmission of images to the screen of a mobile device in real time, remote control of digital functions of the device and many others. Users registered in the application are provided with cloud storage space for photos and videos taken with a digital or thermal imaging device.





Disclosure

The product availability on website is for marketing purpose only and does not guarantee/imply that the device is available in your country for use/sell/order/other purposes. These products require special license and even could be forbidden due to local legislation.

Specifications



THERMION 2 LRF XP50 PRO

Main

Sensor	640x480 @ 17 μ m (NETD <25 mK)
Objective lens	F50/1.0
Magnification, x	2-16
Field of view (HxV), degrees / m@100m	12.4x9.3 / 21.8x16.3
Detection range, m	1800

Main

Sensor	640x480 @ 17 μ m (NETD <25 mK)
Objective lens	F50/1.0
Magnification, x	2-16
Field of view (HxV), degrees / m@100m	12.4x9.3 / 21.8x16.3
Detection range, m	1800

Sensor

Type	uncooled
Resolution, pixels	640x480
Pixel pitch, μ m	17

NETD, mK	<25
----------	-----

Frame rate, Hz	50
----------------	----

Optics

Objective lens	F50 / 1.0
----------------	-----------

Magnification, x	2 - 16
------------------	--------

Field of view (HxV), degrees / m @ 100 m	12.4x9.3 / 21.8x16.3
--	----------------------

Eye relief, mm	50
----------------	----

Display

Type	AMOLED
------	--------

Resolution, pixels	1024x768
--------------------	----------

Range Performance

Detection range, m	1800
--------------------	------

Laser Rangefinder

Safety class for laser equipment according to IEC 60825-1:2014	1
--	---

Wavelength, nm	905
----------------	-----

Max. measuring range, m	800
-------------------------	-----

Measurement accuracy, m	± 1
-------------------------	-----

Reticle

Click value, H/V, mm at 100 m	21 / 21 (on minimum magnification)
-------------------------------	------------------------------------

Click range, H/V, mm at 100 m	4200 / 4200
-------------------------------	-------------

Number of preloaded reticles	10
------------------------------	----

Video Recorder

Video / photo resolution, pixel 1024x768

Video / photo format .mp4 / .jpg

Built-in memory, GB 16

Wi-Fi

Wireless Protocol Wi-Fi

Wireless Standard IEEE 802.11 b/g/n/ac

Frequency, GHz 2.4 / 5

Environmental Characteristics

Degree of protection, IP code (IEC60529) IPX7

Operating temperature range, °C -25 – +50

Connections and Compatibilities

Max. recoil power on rifled weapon (Eo), Joules 6000

Shock resistance on the smooth-bore rifles, caliber 12

Compatible mounts Standard 30 mm rings

Remote control Pulsar BT (optional)

Supported Application Stream Vision 2

Power Supply

Output voltage, V 3.0 – 4.2

Battery type Dual Li-Ion B-Pack Mini Power System: 2 A·h Changeable Battery (external) / 4.9 A·h Battery (internal)

Capacity, mAh 2000 (external) + 4900 (internal)

Operating time on battery pack (at
t=22°C), h *

10

External power supply, V

5 V, 9 V (USB Type-C Power
Delivery)

Weight & Size

Body material

Aluminum alloy

Dimensions, mm

420x78,5x94,5

Weight, kg

0.97

Trade Data

SKU (Model #)

76551

Status

production

По вопросам продаж и поддержки обращайтесь:

Алматы (7273)495-231	Казань (843)206-01-48	Новокузнецк (3843)20-46-81	Смоленск (4812)29-41-54
Архангельск (8182)63-90-72	Калининград (4012)72-03-81	Новосибирск (383)227-86-73	Сочи (862)225-72-31
Астрахань (8512)99-46-04	Калуга (4842)92-23-67	Омск (3812)21-46-40	Ставрополь (8652)20-65-13
Барнаул (3852)73-04-60	Кемерово (3842)65-04-62	Орел (4862)44-53-42	Сургут (3462)77-98-35
Белгород (4722)40-23-64	Киров (8332)68-02-04	Оренбург (3532)37-68-04	Тверь (4822)63-31-35
Брянск (4832)59-03-52	Краснодар (861)203-40-90	Пенза (8412)22-31-16	Томск (3822)98-41-53
Владивосток (423)249-28-31	Красноярск (391)204-63-61	Пермь (342)205-81-47	Тула (4872)74-02-29
Волгоград (844)278-03-48	Курск (4712)77-13-04	Ростов-на-Дону (863)308-18-15	Тюмень (3452)66-21-18
Вологда (8172)26-41-59	Липецк (4742)52-20-81	Рязань (4912)46-61-64	Ульяновск (8422)24-23-59
Воронеж (473)204-51-73	Магнитогорск (3519)55-03-13	Самара (846)206-03-16	Уфа (347)229-48-12
Екатеринбург (343)384-55-89	Москва (495)268-04-70	Санкт-Петербург (812)309-46-40	Хабаровск (4212)92-98-04
Иваново (4932)77-34-06	Мурманск (8152)59-64-93	Саратов (845)249-38-78	Челябинск (351)202-03-61
Ижевск (3412)26-03-58	Набережные Челны (8552)20-53-41	Севастополь (8692)22-31-93	Череповец (8202)49-02-64
Иркутск (395)279-98-46	Нижний Новгород (831)429-08-12	Симферополь (3652)67-13-56	Ярославль (4852)69-52-93
Россия (495)268-04-70	Киргизия (996)312-96-26-47	Казахстан (7172)727-132	