

Krypton

Технические характеристики

По вопросам продаж и поддержки обращайтесь:

Алматы (7273)495-231
Архангельск (8182)63-90-72
Астрахань (8512)99-46-04
Барнаул (3852)73-04-60
Белгород (4722)40-23-64
Брянск (4832)59-03-52
Владивосток (423)249-28-31
Волгоград (844)278-03-48
Вологда (8172)26-41-59
Воронеж (473)204-51-73
Екатеринбург (343)384-55-89
Иваново (4932)77-34-06
Ижевск (3412)26-03-58
Иркутск (395)279-98-46
Россия (495)268-04-70

Казань (843)206-01-48
Калининград (4012)72-03-81
Калуга (4842)92-23-67
Кемерово (3842)65-04-62
Киров (8332)68-02-04
Краснодар (861)203-40-90
Красноярск (391)204-63-61
Курск (4712)77-13-04
Липецк (4742)52-20-81
Магнитогорск (3519)55-03-13
Москва (495)268-04-70
Мурманск (8152)59-64-93
Набережные Челны (8552)20-53-41
Нижний Новгород (831)429-08-12
Киргизия (996)312-96-26-47

Новокузнецк (3843)20-46-81
Новосибирск (383)227-86-73
Омск (3812)21-46-40
Орел (4862)44-53-42
Оренбург (3532)37-68-04
Пенза (8412)22-31-16
Пермь (342)205-81-47
Ростов-на-Дону (863)308-18-15
Рязань (4912)46-61-64
Самара (846)206-03-16
Санкт-Петербург (812)309-46-40
Саратов (845)249-38-78
Севастополь (8692)22-31-93
Симферополь (3652)67-13-56
Казахстан (7172)727-132

Смоленск (4812)29-41-54
Сочи (862)225-72-31
Ставрополь (8652)20-65-13
Сургут (3462)77-98-35
Тверь (4822)63-31-35
Томск (3822)98-41-53
Тула (4872)74-02-29
Тюмень (3452)66-21-18
Ульяновск (8422)24-23-59
Уфа (347)229-48-12
Хабаровск (4212)92-98-04
Челябинск (351)202-03-61
Череповец (8202)49-02-64
Ярославль (4852)69-52-93

Thermal Imaging Front Attachment

KRYPTON



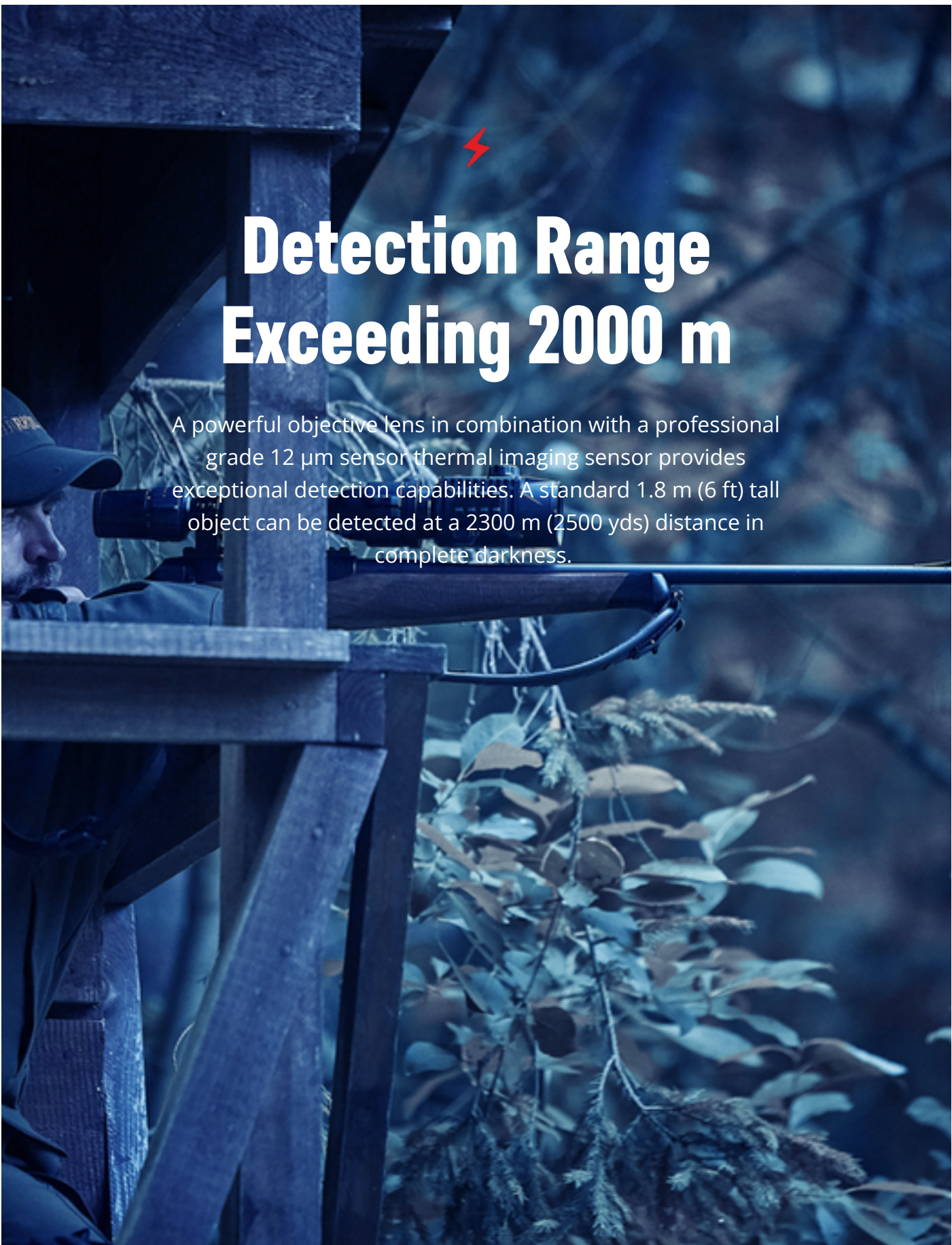
THERMAL UPGRADE

Based on a new cutting-edge 12 μm thermal imaging detector with 640x480 pixel resolution and a high quality HD AMOLED microdisplay, the KRYPTON FXG50 offers the sharpest image while retaining the accuracy of the day scope. Suitable for various optics with a wide range of magnifications, Krypton FXG is a true thermal upgrade turning day riflescopes into powerful thermal imaging aiming systems.



Detection Range Exceeding 2000 m

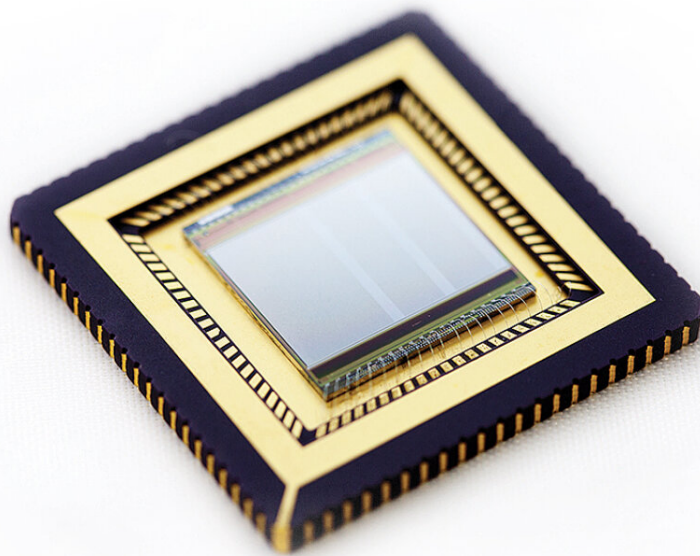
A powerful objective lens in combination with a professional grade 12 μm sensor thermal imaging sensor provides exceptional detection capabilities. A standard 1.8 m (6 ft) tall object can be detected at a 2300 m (2500 yds) distance in complete darkness.





Highly Sensitive 640x480/12 μm Thermal Imaging Sensor

For image acquisition the KRYPTON uses a high quality 12 μm thermal imaging sensor with 640x480 pixel resolution that offers an exceptionally crisp contrast image and excellent thermal sensitivity in all weather conditions.





High Definition Image

Sharp, richly contrasted thermal imaging for enhanced identification of animals, their extremities and even the smallest details, i.e. branches, leaves, grass and terrain.




Quick Release Adaptor with Precise Screen Positioning Mechanism in the Field of View of Day Optics

The attachment docks with a front quick release PSP adaptor mount and is easily put on the riflescope and taken off. The mount allows the precise alignment of the attachment's field of view with the central point of the riflescope's field of view to achieve the optimal viewing position.



Point-of-Impact Stability

The Krypton allows shooters to focus on quick target acquisition and shot placement in low-light environments without stressful, complex adjustments by utilizing a sequential layout of optical and electronic components designed to provide precise sight alignment and ultra-easy adjustability. The attachment's design ensures stability of the point-of-impact when focusing the attachment for different distances.



Wide range of recommended magnifications of day optics

The Krypton FXG50 attachment can be used comfortably on a wide range of day optic magnifications from 1.5x to 6x.



Shockproof Magnesium Alloy Housing

The rugged and lightweight magnesium alloy housing is designed to withstand recoils of high caliber rifles. Increased structural rigidity reduces vibrations during the shot and leads to enhanced ballistics, while the properties of magnesium alloy help to ensure better heat dissipation.





Built-in Photo and Video Recorder with 16 Gb Memory

The built-in video recorder is a great asset when it comes to filming or taking photos of once-in-a-lifetime experiences. One press of the REC button captures footage that can be shared easily with colleagues, friends and family. 16 Gb of internal memory holds many hours of recorded video and hundreds of photos and recorded files can be downloaded to PC or smartphone.

16 GB



Wi-Fi. Integration with IOS and Android devices

The built-in WiFi module connects the device with either Android or iOS smartphones using the Stream Vision 2 mobile app. This combination opens up a wide range of options: wireless device software updates, real-time image transmission to the mobile device screen, remote control digital functions and much more. Users registered in the application are provided with cloud storage space for photos and videos taken with a digital or thermal imaging device. An important feature is that the device is still compatible with the previous, first version of the Stream Vision application.



More features



Benefits of daylight optics in the nighttime

The Krypton allows users to maintain the benefits of day optics at night. Advantages include the longer eye relief compared to night vision riflescopes, continued use of familiar and conventional aiming reticles, continuous zoom and the quick conversion from day to thermal hunting mode, preserving shooting style.



HD AMOLED Display

A quality HD AMOLED display delivers crisp, richly contrasted, vivid images. The AMOLED technology provides flawless, fluid, high-resolution imaging and power savings



Long Operation Time

Quick change rechargeable battery packs provide enough power for up to 8 hours of non-stop operation. On one battery pack the unit can run the whole night without the need to be replaced. Any ordinary power bank can be connected via Micro USB and used as an external power supply.



Recoil Rated up to .375 H&H, 12-Gauge and 9.3x64

The Krypton is recoil rated up to 6,000 joules for flawless performance on larger calibers up to .375 H&H, 12-gauge and 9.3x64.



Software Evolution Support

A smartphone, the free mobile application Stream Vision and Internet access is all one needs to check updates and to install new firmware. This allows a user to improve or add new features to the Krypton he/she already owns.



IPX7 Waterproof Rated



The IPX7 waterproof rating protects against heavy rainfall, snow or other precipitation. The KRYPTON is designed to run flawlessly, even after submersion in up to 3 feet of water for up to 30 minutes.



Wide Range of Operating Temperatures (-25 to +50°C)

The housing, power unit, optics and electronics of the Krypton are designed for applications in a wide range of temperatures. The Krypton ensures reliable and effective performance in extreme cold down to -25°C.

Specifications



Krypton FXG50

Main

Sensor	640x480 @ 12 μ m (VOx)
Objective lens	F50/1.2
Detection range, m	2300

Main

Sensor	640x480 @ 12 μ m (VOx)
--------	----------------------------

Objective lens	F50/1.2
----------------	---------

Field of view (HxV), degrees / m@100m	-
---------------------------------------	---

Detection range, m	2300
--------------------	------

Sensor

Type	VOx, uncooled
------	---------------

Resolution, pixels	640x480
--------------------	---------

Pixel pitch, μ m	12
----------------------	----

NETD, mK	-
----------	---

Frame rate, Hz	50
----------------	----

Optics

Objective lens	F50/1.2
----------------	---------

Field of view (HxV), degrees / m @ 100 m	8.7 x 6.5 / 15.4 x 11.6
--	-------------------------

Recommended magnification of the day sight, x	1.5 – 6
---	---------

Display

Type	AMOLED
------	--------

Resolution, pixels	1746x1000
--------------------	-----------

Range Performance

Detection range, m	2300
--------------------	------

Video Recorder

Video / photo resolution, pixel	960 x 720
---------------------------------	-----------

Video / photo format	mp4 / .jpg
----------------------	------------

Built-in memory, GB	16
---------------------	----

Wi-Fi

Wireless Standard	802,11 b/g
-------------------	------------

Frequency, GHz	2.4
----------------	-----

Environmental Characteristics

Degree of protection, IP code (IEC60529)	-
--	---

Operating temperature range, °C -

Connections and Compatibilities

Max. recoil power on rifled weapon (Eo), Joules 6000

Shock resistance on the smooth-bore rifles, caliber 12

Supported Application Stream Vision 1, Stream Vision 2

Power Supply

Output voltage, V 3.0 – 4.2

Battery type Li-Ion Battery Pack IPS7

Capacity, mAh 6400

Operating time on battery pack (at t=22°C), h *

External power supply, V 5 (microUSB)

Weight & Size

Body material -

Dimensions, mm 143 x 93 x 76

Weight, kg 0.52

Trade Data

SKU (Model #) 76655

Status production

По вопросам продаж и поддержки обращайтесь:

Алматы (7273)495-231	Казань (843)206-01-48	Новокузнецк (3843)20-46-81	Смоленск (4812)29-41-54
Архангельск (8182)63-90-72	Калининград (4012)72-03-81	Новосибирск (383)227-86-73	Сочи (862)225-72-31
Астрахань (8512)99-46-04	Калуга (4842)92-23-67	Омск (3812)21-46-40	Ставрополь (8652)20-65-13
Барнаул (3852)73-04-60	Кемерово (3842)65-04-62	Орел (4862)44-53-42	Сургут (3462)77-98-35
Белгород (4722)40-23-64	Киров (8332)68-02-04	Оренбург (3532)37-68-04	Тверь (4822)63-31-35
Брянск (4832)59-03-52	Краснодар (861)203-40-90	Пенза (8412)22-31-16	Томск (3822)98-41-53
Владивосток (423)249-28-31	Красноярск (391)204-63-61	Пермь (342)205-81-47	Тула (4872)74-02-29
Волгоград (844)278-03-48	Курск (4712)77-13-04	Ростов-на-Дону (863)308-18-15	Тюмень (3452)66-21-18
Вологда (8172)26-41-59	Липецк (4742)52-20-81	Рязань (4912)46-61-64	Ульяновск (8422)24-23-59
Воронеж (473)204-51-73	Магнитогорск (3519)55-03-13	Самара (846)206-03-16	Уфа (347)229-48-12
Екатеринбург (343)384-55-89	Москва (495)268-04-70	Санкт-Петербург (812)309-46-40	Хабаровск (4212)92-98-04
Иваново (4932)77-34-06	Мурманск (8152)59-64-93	Саратов (845)249-38-78	Челябинск (351)202-03-61
Ижевск (3412)26-03-58	Набережные Челны (8552)20-53-41	Севастополь (8692)22-31-93	Череповец (8202)49-02-64
Иркутск (395)279-98-46	Нижний Новгород (831)429-08-12	Симферополь (3652)67-13-56	Ярославль (4852)69-52-93
Россия (495)268-04-70	Киргизия (996)312-96-26-47	Казахстан (7172)727-132	